

Career & College PROMISE



PRE-HEALTH

Rowan-
Cabarrus
COMMUNITY COLLEGE



www.rccc.edu/ccp

COLLEGE CREDITS
TUITION FREE
FOR HIGH SCHOOL JUNIORS & SENIORS

PATHWAYS

If you are interested in healthcare programs and becoming a nurse, radiographer, occupational therapy assistant, or physical therapist assistant – this is a pathway for you! It will allow you to get the pre-requisite courses required to enter into these competitive admission health programs. You can get a head start!

These programs are designed for students wanting to enter these programs at Rowan-Cabarrus.



PRE-HEALTH PATHWAY REQUIREMENTS

High school juniors and seniors may enroll if they have...

- 1 An unweighted GPA of 2.8 or higher
- OR
- 2 Demonstrate college readiness on one of the approved placement tests on the following page.

APPROVED PLACEMENT TESTS

PSAT 10 and PSAT/NMSQT 2015 and future		NC DAP (NCCCS Cut Score)	RISE/EDReady
English	26 or a composite score of 460 for Evidenced-Based Reading and Writing	English/Reading Composite score of 151 or higher	English & Reading 75 or higher on Tier 1, 2 and 3
Reading	26 or a composite score of 460 for Evidenced-Based Reading and Writing		
Mathematics 24.5 or 510		Mathematics 7 on each a assessment for DMA 010 thru 060	Mathematics 75 or higher on Tier 1, 2 and 3

SAT (March 2016 and Future)		Pre ACT & ACT	
Evidence-Based Reading and Writing	480	English	18
		Reading	22
Mathematics	530	Mathematics	22

Other exemptions might be possible. Please check with your high school counselor to check on these exemptions.

PRE-NURSING PATHWAY

THERAPEUTIC & DIAGNOSTIC SERVICES/ NURSE AIDE – PRE-NURSING DIPLOMA

(D45970PU) North Campus, NCRC, South Campus & Online.

The Rowan-Cabarrus nursing curriculum provides knowledge and skills to integrate safety and quality into nursing care to meet the needs of the holistic individual which impact health, quality of life, and achievement of potential. Course work includes and builds upon the domains of healthcare, nursing practice, and the holistic individual. Content emphasizes safe, individualized nursing care and participation in the interdisciplinary team while employing evidence-based practice, quality improvement, and informatics.

<u>Course</u>	<u>Title</u>	<u>Credits</u>
ENG 111	Writing and Inquiry	3
ENG 112	Writing and Research in the Disciplines	3
HUM 115	Critical Thinking	3
BIO 168	Anatomy and Physiology I	4
BIO 169	Anatomy and Physiology II	4
PSY 150	General Psychology	3
PSY 241	Developmental Psychology	3
**NAS 101	Nurse Aide I	6
**NAS 102	Nurse Aide II	6

Other required courses

ACA 118	College Study Skills
*HSC 120	CPR
MED 120	Survey of Med Terminology

* Credit may be assigned for students who take Health Science II in high school based on the N.C. High School to Community College Articulation Agreement.

** Students will need to be admitted into the CCP Nurse Aid Pathway. This pathway is for HS seniors only and is competitive admissions with limited seats available.



PRE-RADIOGRAPHY PATHWAY

THERAPEUTIC & DIAGNOSTIC SERVICES/ NURSE AIDE – PRE-RADIOGRAPHY DIPLOMA

(D45970PR) North Campus, NCRC, South Campus & Online.

The Rowan-Cabarrus radiography curriculum prepares the graduate to be a radiographer, a skilled health care professional who uses radiation to produce images of the human body. Students will learn how to operate x-ray machinery as a critical part of the team in diagnosing and treating patients. The radiography program is accredited by the Joint Review Committee on Education in Radiologic Technology (JRCERT).

<u>Course</u>	<u>Title</u>	<u>Credits</u>
ENG 111	Writing and Inquiry	3
HUM 115	Critical Thinking	3
BIO 168	Anatomy and Physiology I	4
BIO 169	Anatomy and Physiology II	4
PSY 150	General Psychology	3
MAT 143	Quantitative Literacy	3
COM 231	Public Speaking	3
PHY 110/110A	Conceptual Physics	3
**NAS 101	Nurse Aide I	6
**NAS 102	Nurse Aide II	6

Other required courses

*HSC 120	CPR
MED 120	Survey of Med Terminology

* Credit may be assigned for students who take Health Science II in high school based on the N.C. High School to Community College Articulation Agreement.

** Students will need to be admitted into the CCP Nurse Aid Pathway. This pathway is for HS seniors only and is competitive admissions with limited seats available.



PRE-OCCUPATIONAL THERAPY ASSISTANT PATHWAY

THERAPEUTIC & DIAGNOSTIC SERVICES/ NURSE AIDE – OTA DIPLOMA

(D45970PC) North Campus, NCRC, South Campus & Online.

Occupational therapy assistants help patients of all ages and with all different types of disabilities and challenges to participate in everyday life activities. They are patient, reliable and compassionate individuals. Under the supervision of an occupational therapist, this health care professional focuses on providing treatments that will assist disabled people to function independently in their homes and their communities, and help people regain skills lost due to injury.

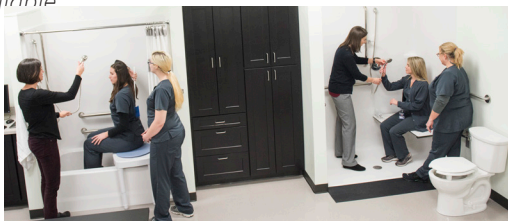
<i>Course</i>	<i>Title</i>	<i>Credits</i>
ENG 111	Writing and Inquiry	3
HUM 115	Critical Thinking	3
BIO 168	Anatomy and Physiology I	4
BIO 169	Anatomy and Physiology II	4
PSY 150	General Psychology	3
COM 110	Introduction to Communication	3
**NAS 101	Nurse Aide I	6
**NAS 102	Nurse Aide II	6
PSY 241	Developmental Psychology	3

Other required courses

ACA 118	College Study Skills
*HSC 120	CPR
MED 120	Survey of Med Terminology

* Credit may be assigned for students who take Health Science II in high school based on the N.C. High School to Community College Articulation Agreement.

** Students will need to be admitted into the CCP Nurse Aid Pathway. This pathway is for HS seniors only and is competitive admissions with limited seats available



PRE-PHYSICAL THERAPIST ASSISTANT PATHWAY

THERAPEUTIC & DIAGNOSTIC SERVICES/ NURSE AIDE – PTA DIPLOMA

(D45970PP) North Campus, NCRC, South Campus & Online.

Physical therapy is a dynamic profession that helps people improve mobility, relieve pain, prevent or limit permanent physical disability and promote overall fitness and wellness.



Physical therapist assistants (PTAs) provide physical therapy services under the direction and supervision of a licensed physical therapist. PTAs help people of all ages who have medical problems, or other health-related conditions that limit

their ability to move and perform functional activities in their daily lives.

PTAs work in a variety of settings including hospitals, private practices, outpatient clinics, home health, nursing homes, schools, sports facilities, and more.

<i>Course</i>	<i>Title</i>	<i>Credits</i>
ENG 111	Writing and Inquiry	3
HUM 115	Critical Thinking	3
BIO 168	Anatomy and Physiology I	4
BIO 169	Anatomy and Physiology II	4
PSY 150	General Psychology	3
COM 231	Public Speaking	3
**NAS 101	Nurse Aide I	6
**NAS 102	Nurse Aide II	6
MAT 143	Quantitative Literacy	3

Other required courses

ACA 118	College Study Skills
*HSC 120	CPR
MED 120	Survey of Med Terminology

* Credit may be assigned for students who take Health Science II in high school based on the N.C. High School to Community College Articulation Agreement.

** Students will need to be admitted into the CCP Nurse Aid Pathway. This pathway is for HS seniors only and is competitive admissions with limited seats available.

NURSE AIDE CERTIFICATE

(C45840PB)

Available at NCRC location.

This is a competitive admissions program that students must apply for the spring before their senior year. Limited spots available.

The Nurse Aide I and II program is designed to teach fundamental skills required of health care professionals. Upon successful completion of this program, students are eligible to take the NC Division of Health Service Regulation Nurse Aide Registry Exam. The registry listing is required to be employed by hospitals, long-term facilities, and home health agencies.

<u>Course</u>	<u>Title</u>	<u>Credits</u>
Fall		
NAS 101	Nurse Aide I	6
MED 130	Admin Office Proc I	2
Spring		
NAS 102	Nurse Aide II	6
PSY 150	General Psychology	3

**Total Credit Hours Required for
Nurse Aide Program**

17



High school seniors only.

STEPS TO ENROLL



- 1 Complete the online application – www.rccc.edu/ccp
- 2 Complete the student agreement form – www.rccc.edu/ccp
- 3 Submit high school transcripts, and if a homeschool student, the N.C. homeschool certification is required also.
- 4 High School Principal or Designee submits the Counselor Approval Form
 - The College works with the high schools to get this form completed.
- 5 For Nurse Aide certificate applicants, complete the nurse aide application packet by the deadline.
- 6 Attend a required orientation.



POSSIBLE FIRST-YEAR COURSE PLAN

Fall Courses

ENG 111
BIO 168

Spring Courses

PSY 150
BIO 169

Summer Course

ENG 112



*Navigate
Forward*

WAYS TO EARN YOUR NURSE AIDE I

There are multiple ways to earn your Nurse Aide I:

- 1** Pursue the Nurse Aide Certificate Pathway through the Career & College Promise program and pass the Nurse Aide I state exam.
(Page 8)
 - a. This program is a competitive admissions program with limited spots available and courses taken over the course of a full year (fall and spring terms) at the North Carolina Research Campus (NCRC) in Kannapolis.
- 2** Take the Nurse Aide 1 course through Rowan-Cabarrus Community College Continuing Education and pass the Nurse Aide 1 state exam.
 - a. This course is offered multiple times per year at a number of locations across Rowan and Cabarrus counties. However, this option would be paid for out-of-pocket with a tuition of \$200.43 (plus books and equipment).
- 3** Take the Nursing Fundamentals course through your high school and pass the Nurse Aide I state exam.





Career & College PROMISE

For more information,
talk to your
high school counselor
or your career development
coordinator.

North Campus

1333 Jake Alexander Blvd., S
Salisbury, N.C. 28146

South Campus

1531 Trinity Church Rd.
Concord, N.C. 28027

College Station

489 N. Cannon Blvd.
Kannapolis, N.C. 28081

Cabarrus Business & Technology Center (CBTC)

660 Concord Parkway, N.
Concord, N.C. 28027

North Carolina Research Campus

399 Biotechnology Ln.
Kannapolis, N.C. 28081

www.rccc.edu/ccp
ccp@rccc.edu